



HIGH-QUALITY METAL STAIR TREADS AND PANS FOR METAL STAIRS

MODEL # P-4A CHECKER / DIAMOND PLATE STAIR PAN

MANUFACTURED TO SPEC BUILDING CODE COMPLIANT

- **Use:** Serving as the final stair tread finish, the diamond pattern offering traction for walking
- **Material:** Hot Rolled Steel
- **Thickness:** 14 Ga. 12 Ga. 11 Ga. 10 Ga. 1/8" metal plate
- **Finish:** Unfinished steel or hot-dip galvanized, shop primer paint
- **Customize:** Tread depth, riser height, nosing profiles, sanitary cove, perforated riser

FINISH OPTIONS



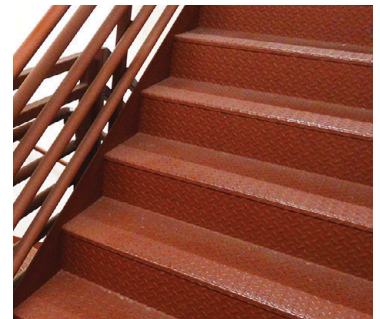
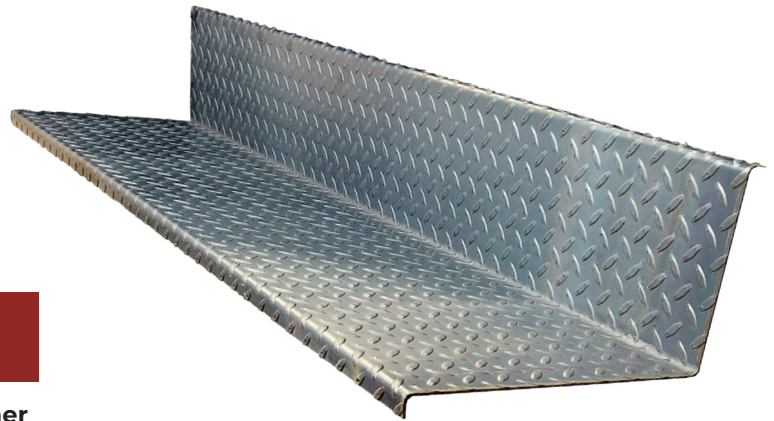
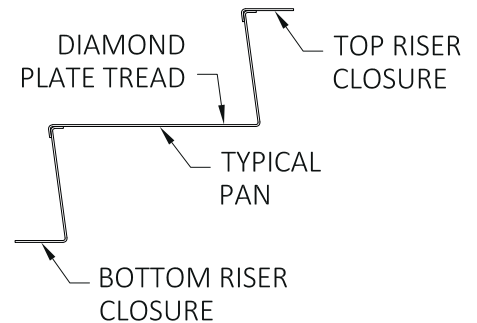
Mild Steel
Unfinished



Hot-Dip
Galvanized



Shop Primer
Red



FOR NEW OR EXISTING STAIR RESTORATION PROJECTS.