



RHINO TRED®

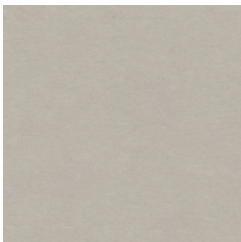
RECYCLED LIGHTWEIGHT
PRECAST CONCRETE STAIR
TREADS & LANDING PLANK

v.1.2

Colors

Rhino Tred precast concrete stair treads are manufactured with a standard color to maintain a consistent product model. During manufacturing, the wet cement is finished with a sand grit coat and gray epoxy floor paint to seal the sand bond. The final product is highly non-slip. The product arrives on site with a consistent anti-slip finish already applied. Should the Rhino Tred need to be refinished in the future, gray epoxy floor paint is readily available.

STANDARD COLORS:



Epoxy Floor Paint

Gray



Disclaimer: Actual color may vary between monitors and printers. Due to the manufacturing process, slight variations of color and texture will occur.